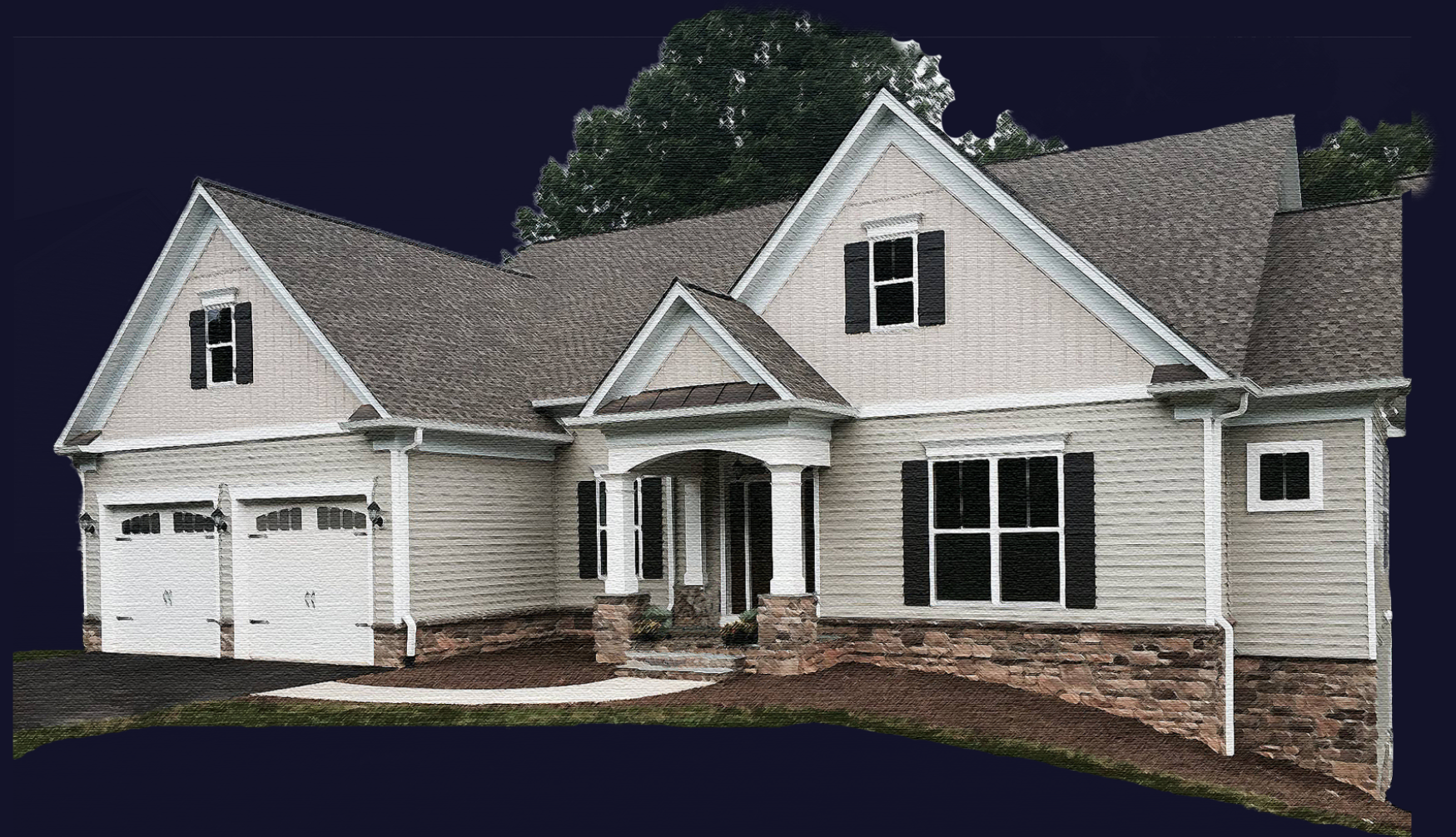


ENJOY OUR SEMI-CUSTOM HOME PLANS

THE *Ashford*



THIS BEAUTIFUL
OPEN CONCEPT
FLOOR PLAN IS
WELCOMING AND
SPACIOUS
FEATURING A
GOURMET CHEF'S
KITCHEN AND
DINING NOOK...



SCHEDULE YOUR FREE HOME BUILDING
CONSULTATION TODAY

540. 972. 3100 | JHALLHOMES.COM

FIND US ON SOCIAL MEDIA

@JHALLHOMES



J. HALL HOMES, INC.

Quality. Craftsmanship. Dependability.

ENJOY OUR SEMI-CUSTOM HOME PLANS

HOME FEATURES:

SINGLE STORY LIVING - 2,600 SQ FT

3 BEDROOMS AND 2 1/2 BATHROOMS

LARGE WALK-IN MASTER CLOSET

SPACIOUS MASTER BATHROOM WITH SPA-LIKE TUB & SHOWER

OPEN FLOOR LAYOUT - GREAT ROOM, KITCHEN, AND BREAKFAST NOOK

LARGE WALK-IN PANTRY

LAUNDRY ROOM OFF THE MASTER CLOSET EASY ACCESS

UNFINISHED BASEMENT WITH 9' WALL

ENERGY EFFICIENT CONSTRUCTION

EARTHCRAFT CERTIFIED



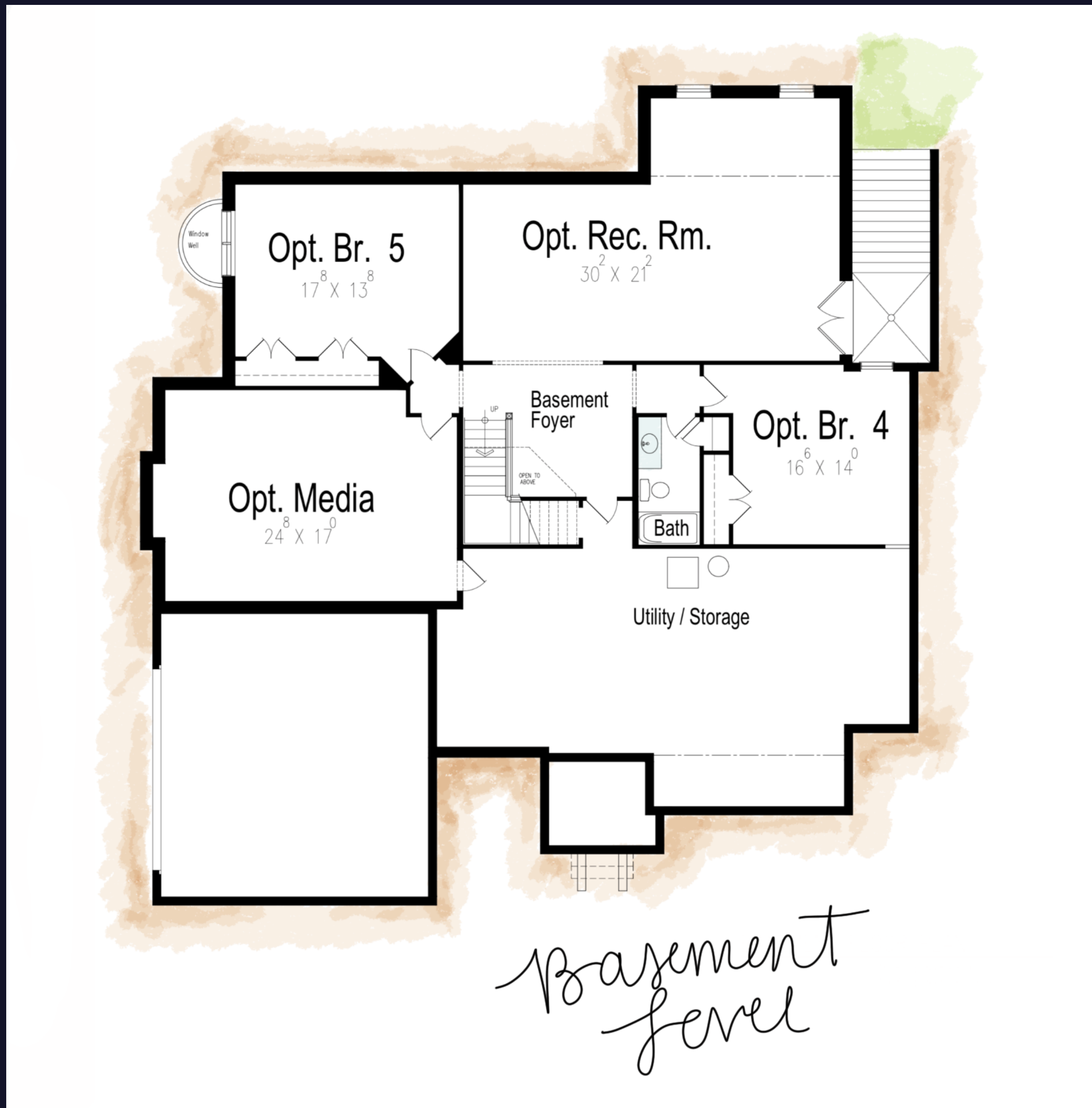
J. HALL HOMES, INC.

Quality. Craftsmanship. Dependability.

ENJOY OUR SEMI-CUSTOM HOME PLANS

SIGNATURE UPGRADES:

- 3 CAR GARAGE
- FINISHED BASEMENT REC ROOM
- FULL FINISHED BASEMENT WITH MEDIA ROOM, BEDROOM 4 & 5, AND BATHROOM
- REAR COVERED DECK
- BENCH WITH CUBBIES IN LAUNDRY ROOM
- SCREENED IN REAR PORCH
- BUILT IN BANQUETTE IN BREAKFAST NOOK
- FIREPLACE IN GREAT ROOM
- TRAY CEILING IN FOYER, MASTER BEDROOM, OR GREAT ROOM



J. HALL HOMES, INC.

Quality. Craftsmanship. Dependability.