

FAMILY EXPERIENCE - SEMI-CUSTOM HOME PLANS

THE *Lauren* II

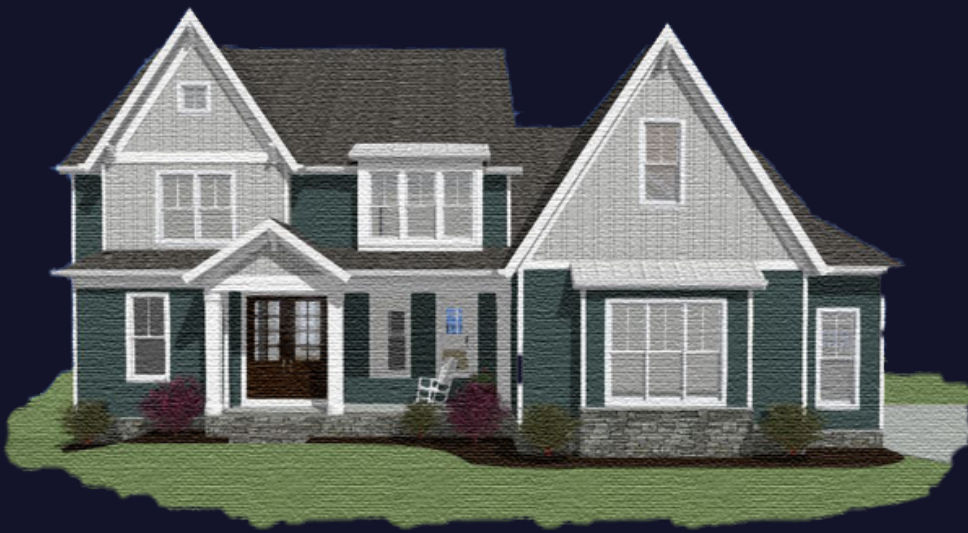


IMAGE MAY SHOW OPTIONAL UPGRADES NOT REFLECTED IN STARTING PRICE

**4 BEDROOM & 3 1/2
BATHROOM HOME
3,420 SQFT**

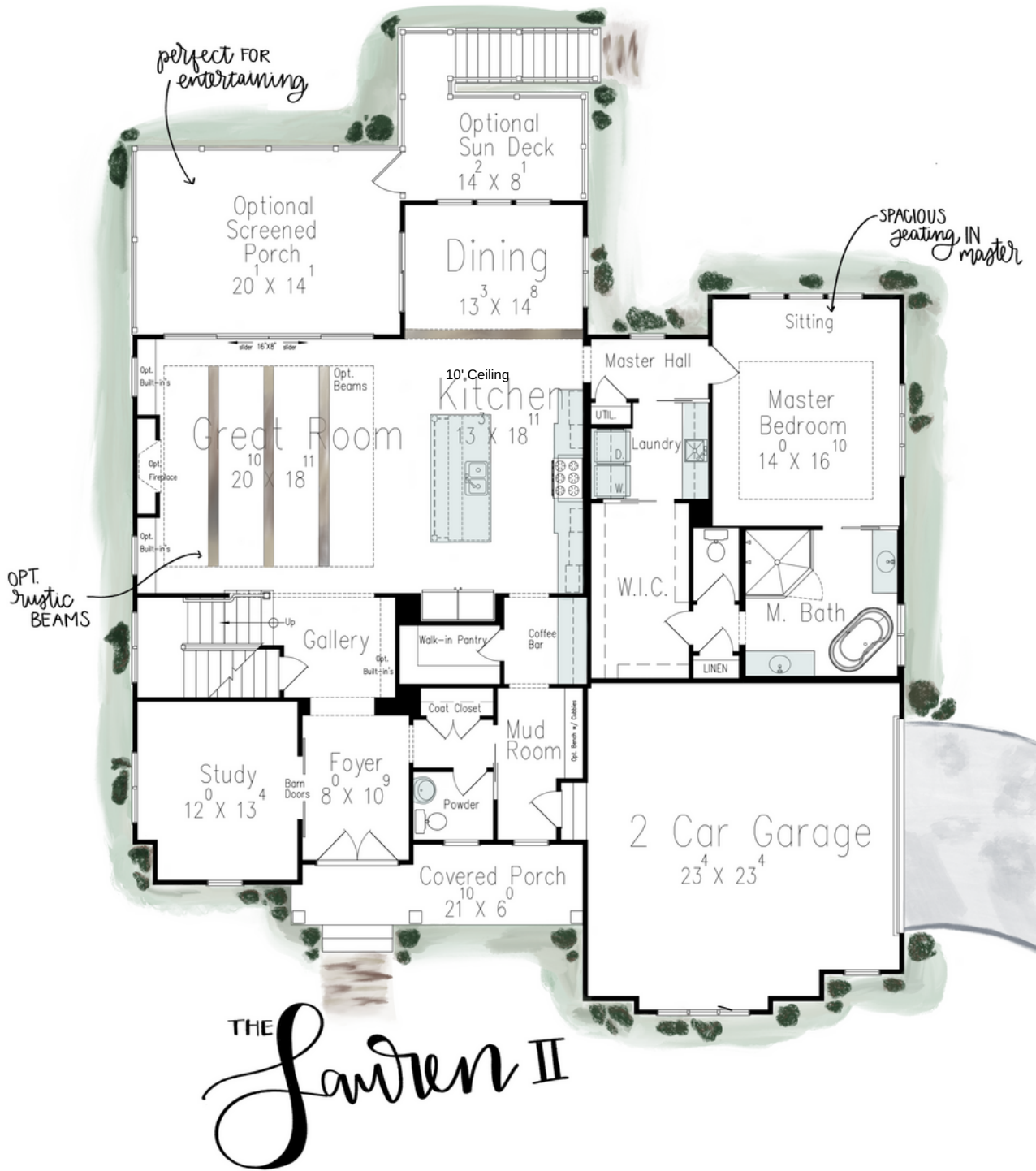
**OUR PREVIOUSLY
BEST SELLING
MODEL, THE
LAUREN, HAS BEEN
REVITALIZED AND
RE-IMAGINED WITH
MODERN &
CAPTIVATING
LIVING IN MIND.**

SCHEDULE YOUR HOME BUILDING
CONSULTATION TODAY
540. 972. 3100 | JHALLHOMES.COM
FIND US ON SOCIAL MEDIA
@JHALLHOMES



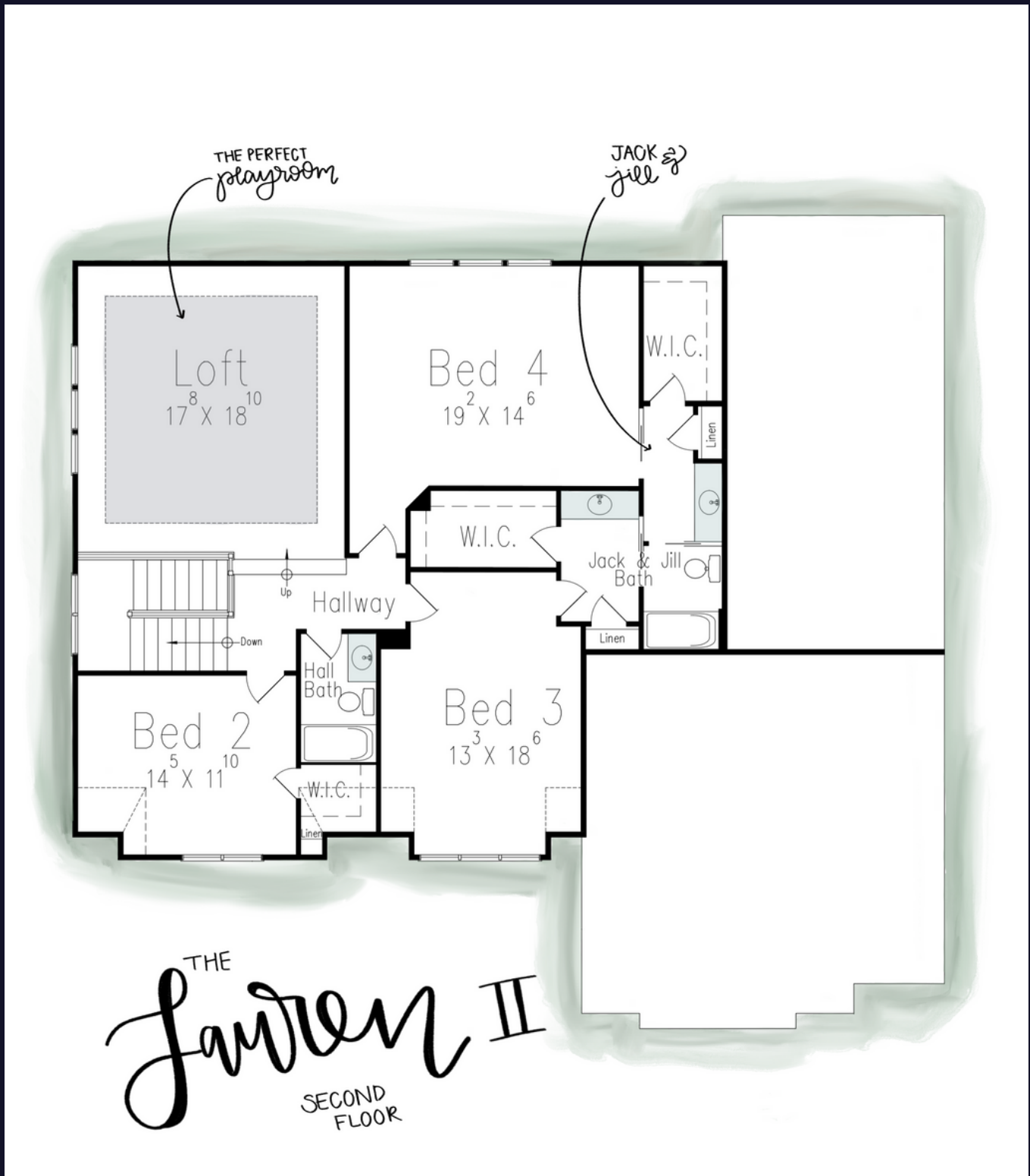
J. HALL HOMES, INC.
Quality. Craftsmanship. Dependability.

FAMILY EXPERIENCE - SEMI-CUSTOM HOME PLANS



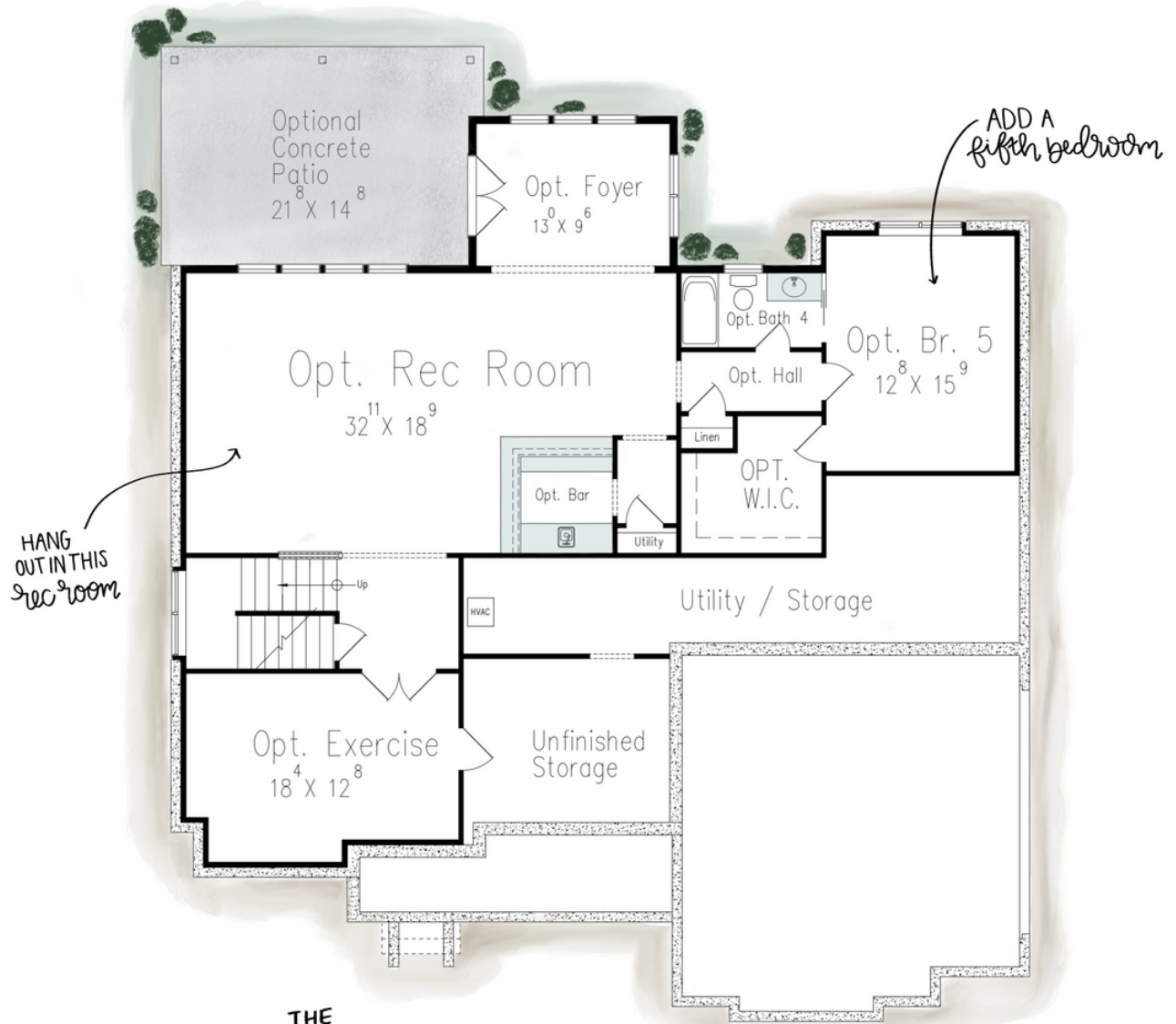
J. HALL HOMES, INC.

Quality. Craftsmanship. Dependability.



J. HALL HOMES, INC.

Quality. Craftsmanship. Dependability.



THE
Sander II
BASEMENT



J. HALL HOMES, INC.

Quality. Craftsmanship. Dependability.



NAMED "BEST HOME BUILDER"
IN THE FREE LANCE STAR'S 2019 BEST OF THE BURG



J. HALL HOMES, INC.

Quality. Craftsmanship. Dependability.

SCHEDULE YOUR HOME BUILDING
CONSULTATION TODAY
540. 972. 3100 | JHALLHOMES.COM
FIND US ON SOCIAL MEDIA
@JHALLHOMES

